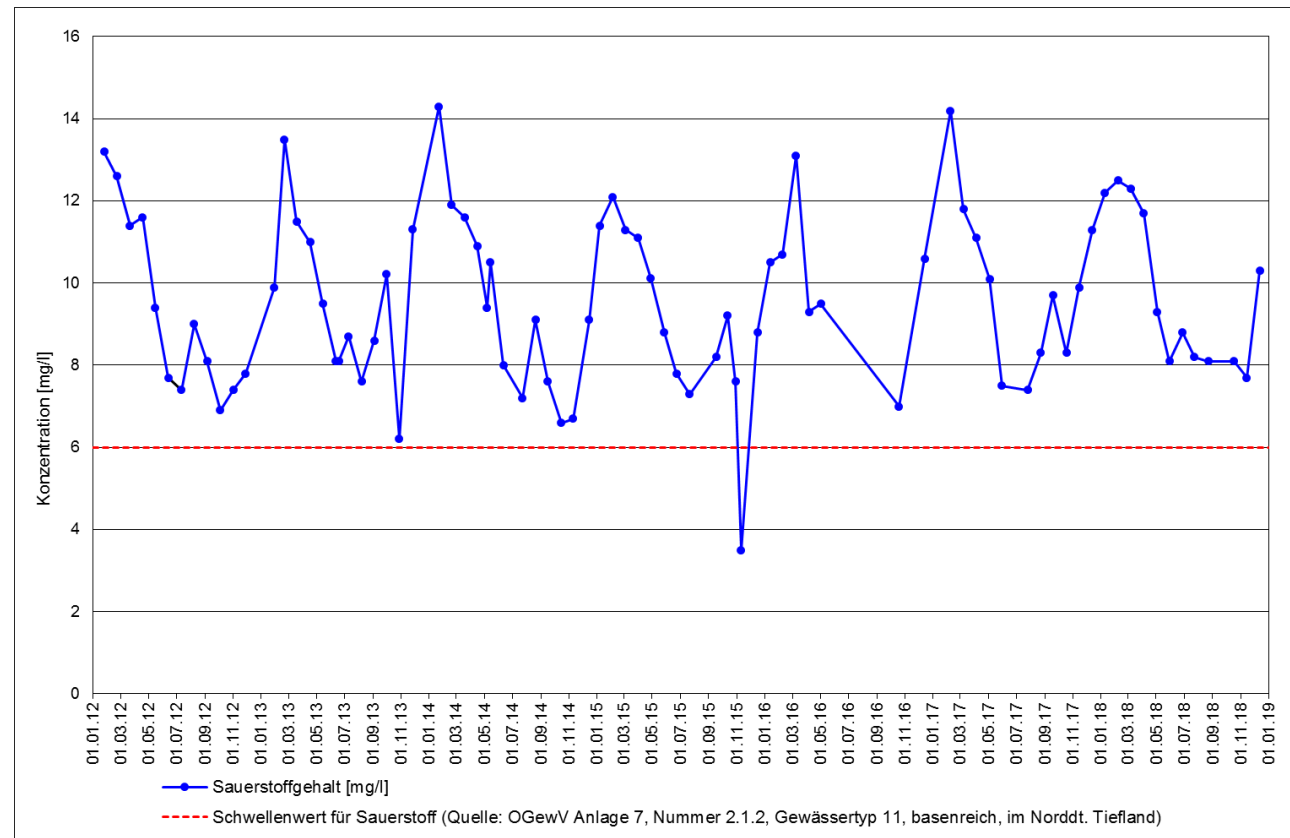
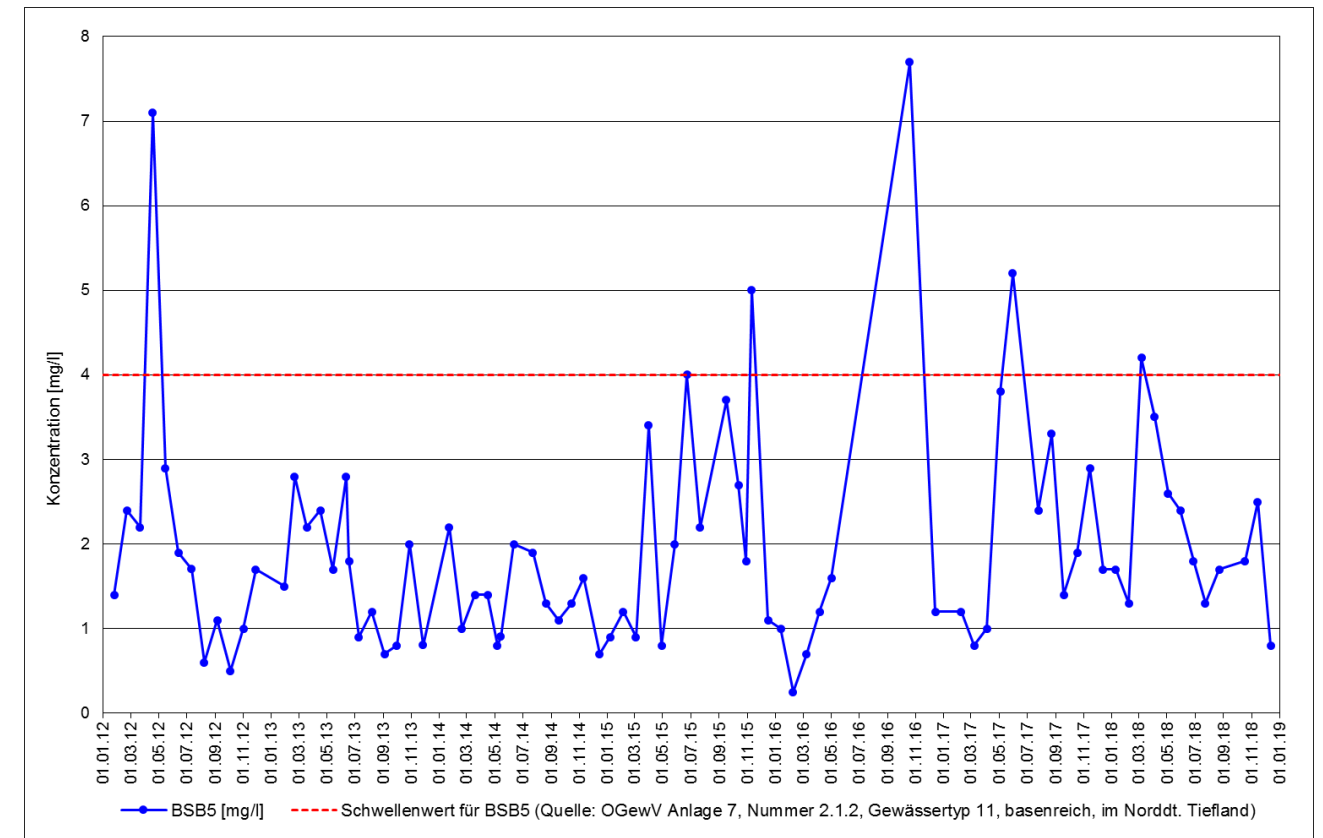


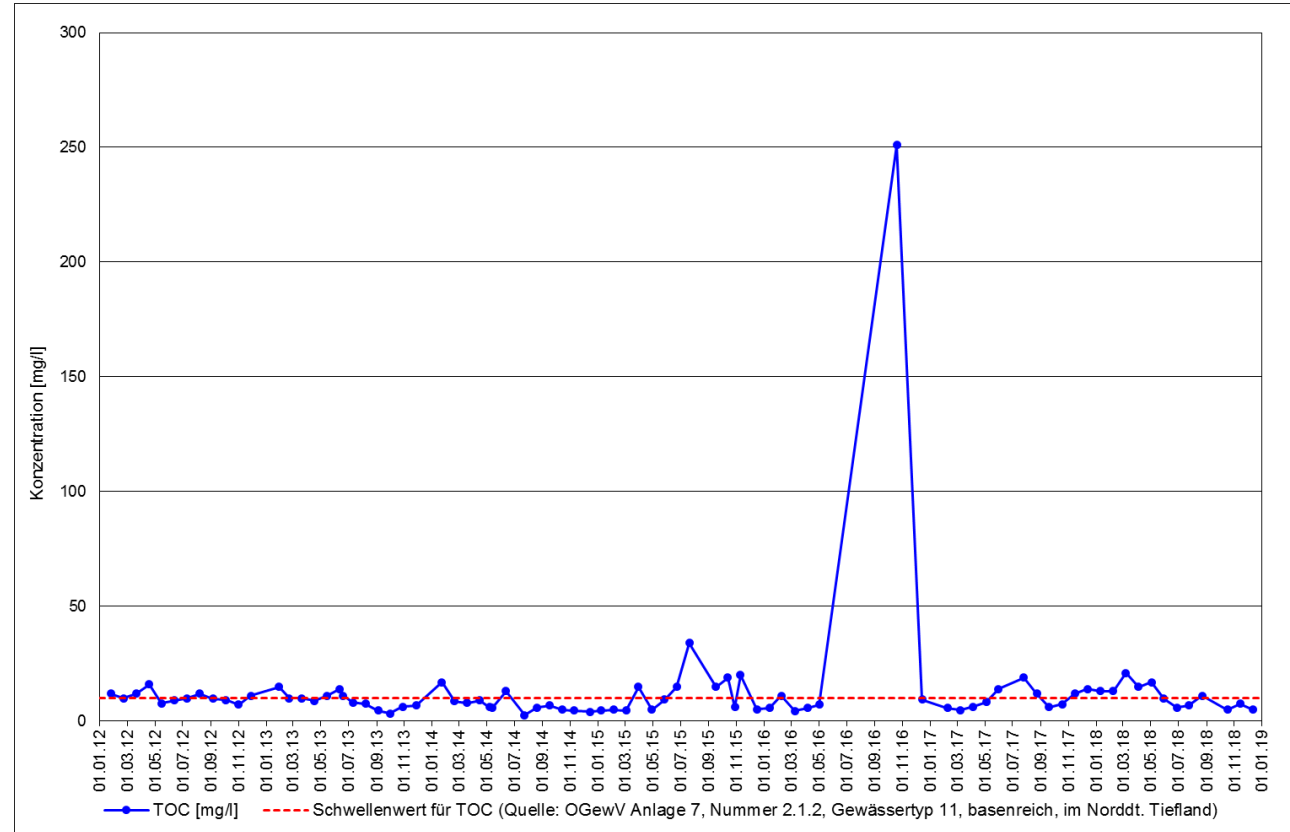
Oberflächenwasserkörper Zohegraben (DE_RW_DEBB5827986_1285) in der Planungseinheit Untere Spree 2 (HAV_PE07):



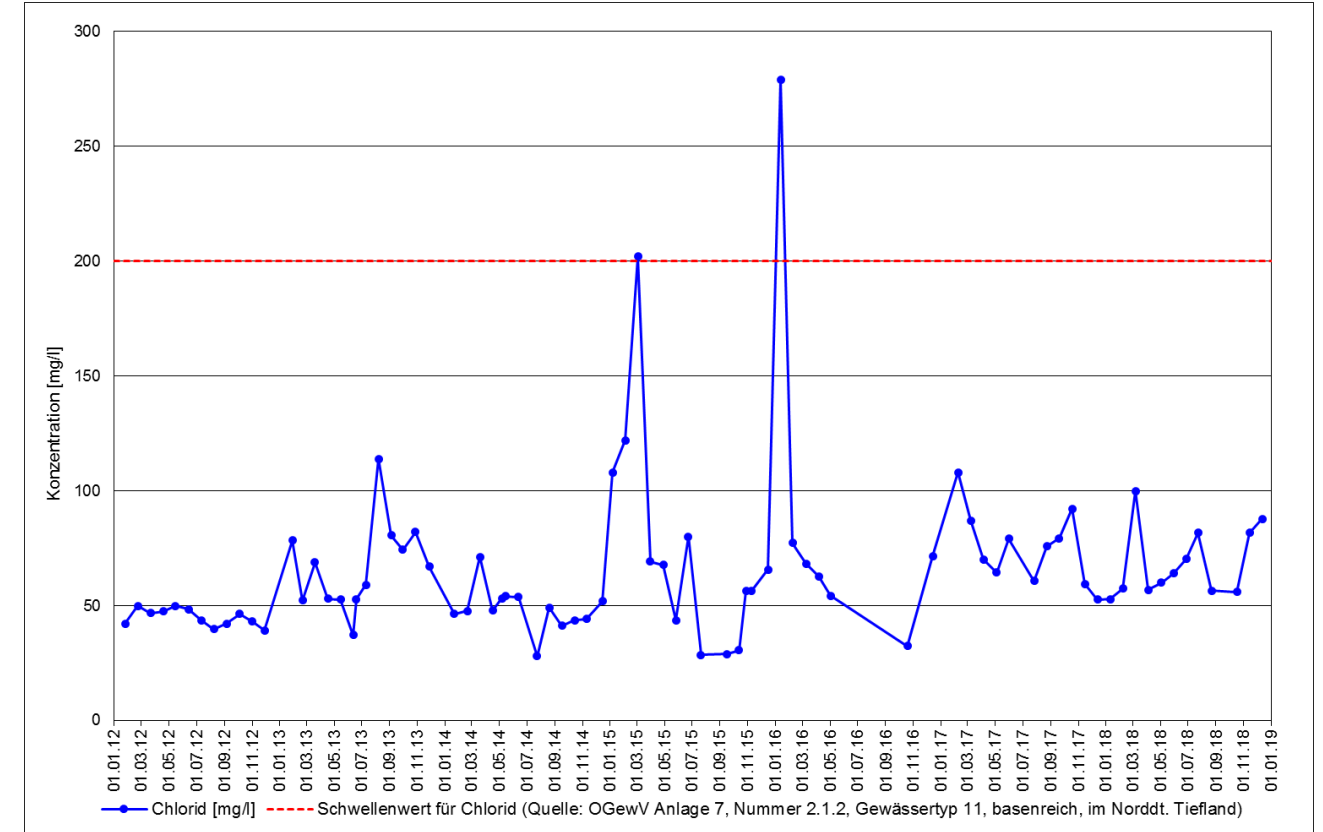
Gemessene Sauerstoff-Konzentrationen [mg/l]



Gemessene BSB₅-Konzentrationen [mg/l]



Gemessene TOC-Konzentrationen [mg/l]



Gemessene Chlorid-Konzentrationen [mg/l]