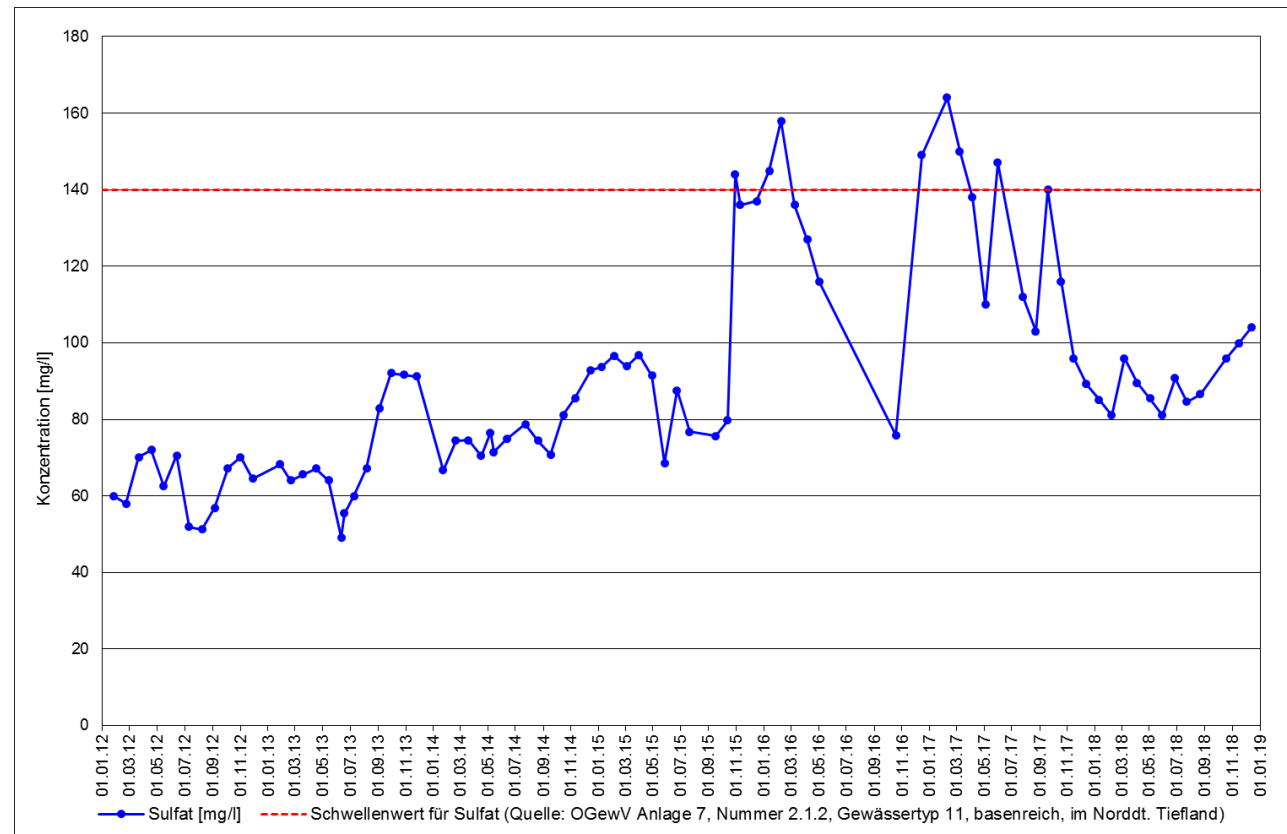
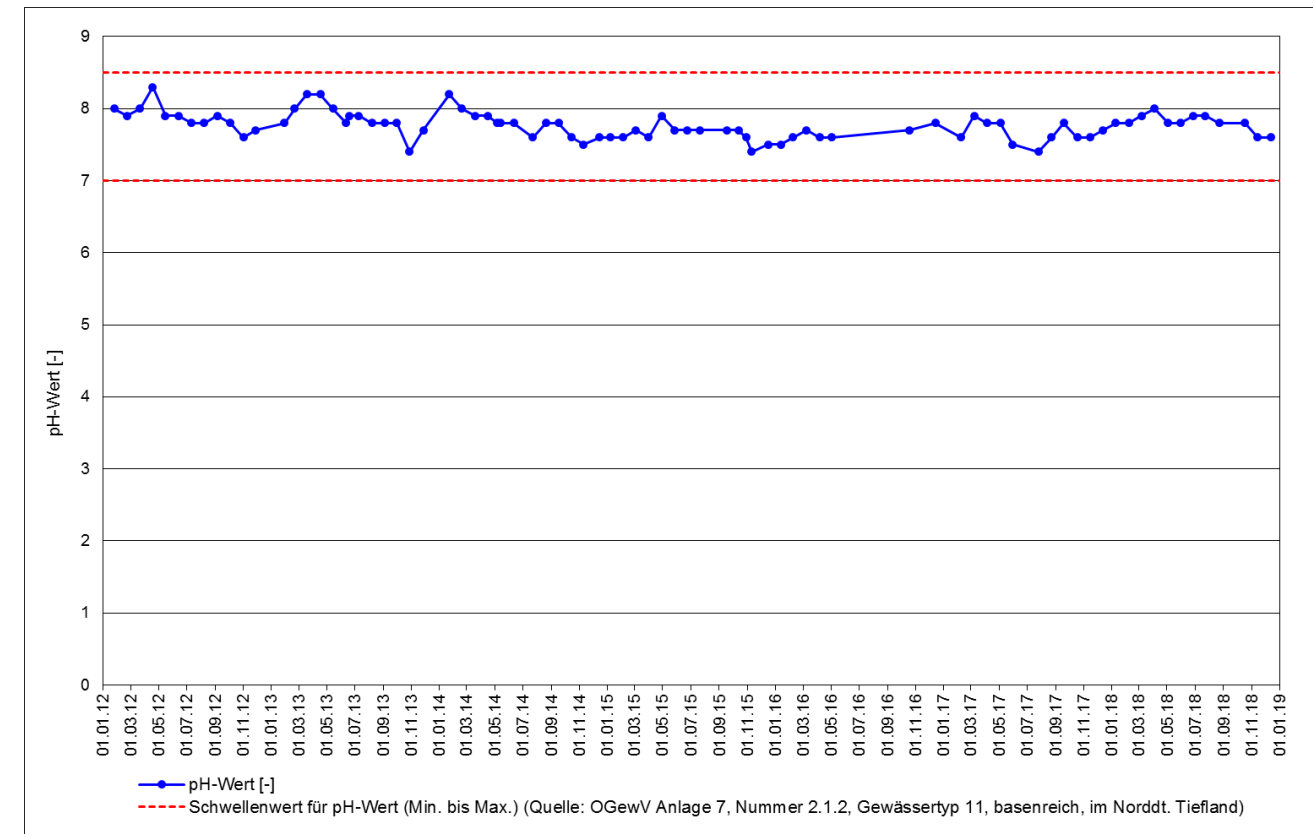


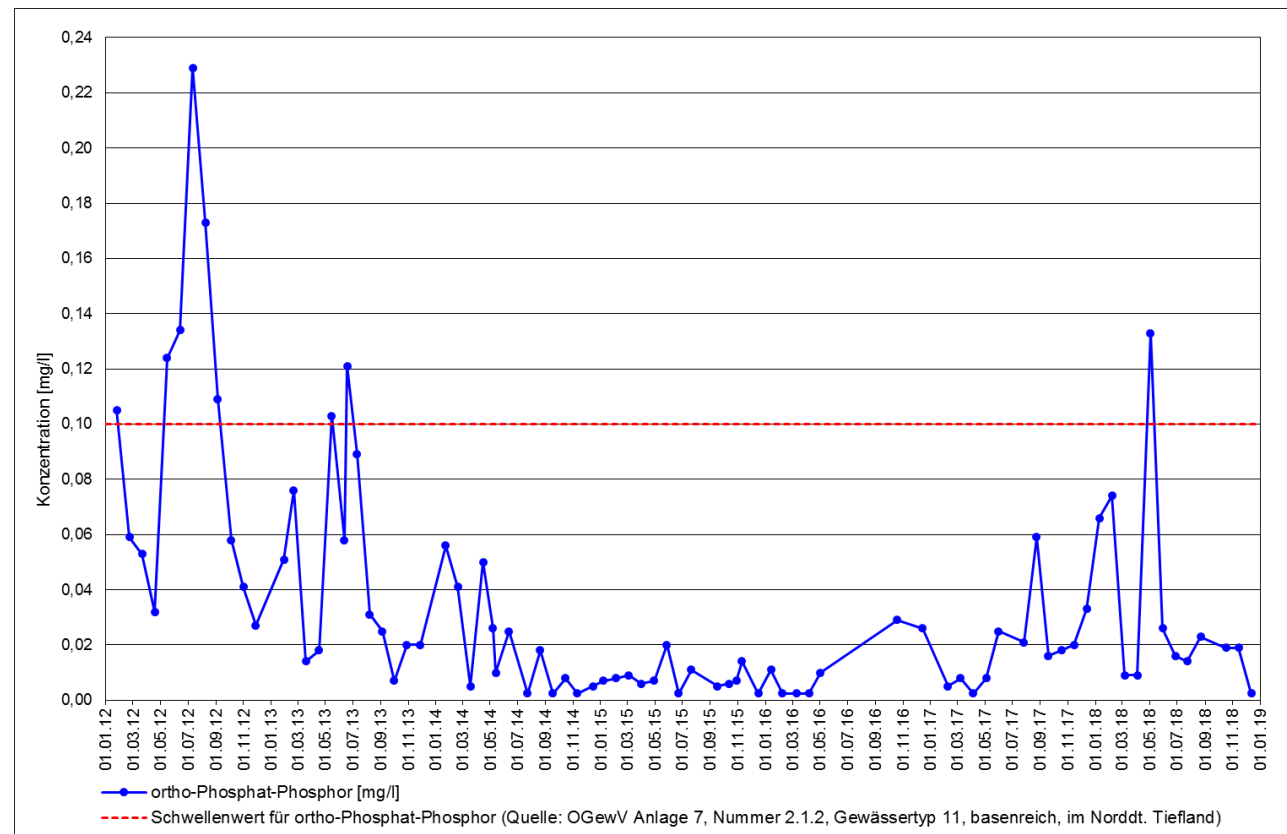
Oberflächenwasserkörper Zochegraben (DE_RW_DEBB5827986_1285) in der Planungseinheit Untere Spree 2 (HAV_PE07):



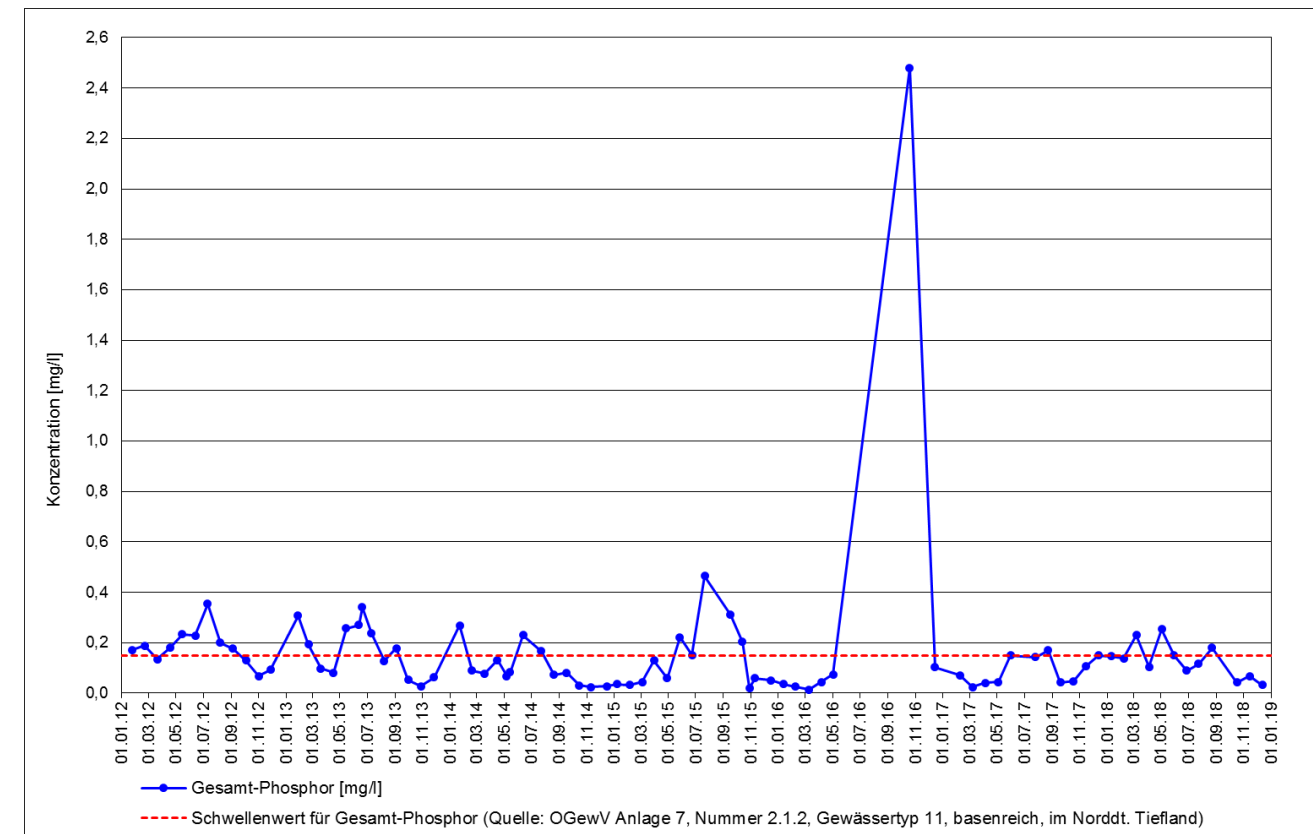
Gemessene Sulfat-Konzentrationen [mg/l]



Gemessene pH-Werte [-]



Gemessene ortho-Phosphat-Phosphor-Konzentrationen [mg/l]



Gemessene Gesamt-Phosphor-Konzentrationen [mg/l]